

Thermal Solutions



BASCO
AN API HEAT TRANSFER COMPANY

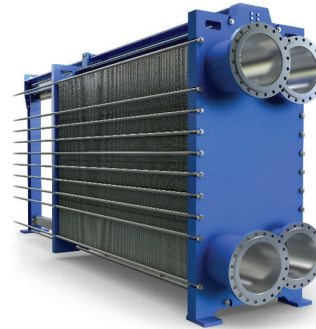
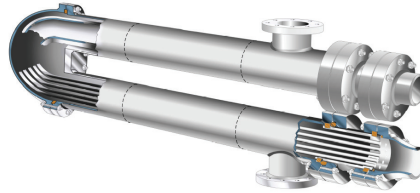
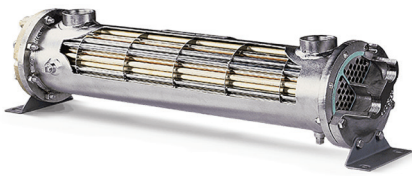
Schmidt
AN API HEAT TRANSFER COMPANY

General ThermoDynamics
AN API HEAT TRANSFER COMPANY

AIRTECH
AN API HEAT TRANSFER COMPANY

TTP Thermal Transfer Products
AN API HEAT TRANSFER COMPANY

API Heat Transfer, a family of high-performance brands



API-Basco Shell & Tube Heat Exchangers Type 500

- Cost-effective, standard design for maximum performance at minimum cost. U-tube designs available.
- Readily available in stock

HT and AHT Hub-Design

- Models feature low-cost, non-ferrous construction with brass shell, brass tube sheet, admiralty, copper tubes, or 316 stainless steel in a wide variety of configurations.

Custom Engineered

- All TEMA type heat exchangers to meet your requirements
- Shell sizes from 6" to 144" with maximum tube length of 50 ft

Hairpin

- Ideal for applications that require high thermal performance and a compact footprint
- Designed and fabricated per ASME, TEMA, CRN, PED, CML

Pipeline Aftercoolers (PLAC)

- PLAC tubes are effectively arranged to maximize heat transfer and reduce cooling water usage

Extended Surface Plate Fin (ES)

- Compact package delivers max heat transfer in a minimum space
- Integrated moisture separation removes need for an external device

Gland Steam Condensers and Packages

- Custom designed to meet your specific performance requirement
- Designed and fabricated per HEI, ASME, TEMA, API
- Available as standalone units or as complete systems
- Essential for improved efficiency in steam turbine systems

Schmidt-Bretten Plate Heat Exchangers Gasketed Plate & Frame

- Unique corrugation pattern pressed onto each plate produces the highest overall heat transfer rate by assuring turbulent flow and excellent fluid distribution across the entire surface
- Available in a variety of plate sizes for industrial, HVAC, power, or food industry applications

All-Welded Plate & Frame

- Built entirely without gaskets, providing the most compact, rugged and cost-effective means of transferring heat

Brazed Plate & Frame

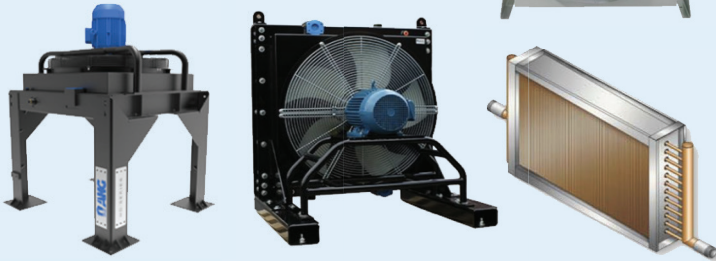
- Built from 316 stainless steel with copper brazing materials, providing corrosion resistance

Plate & Shell

- Has the high efficiencies of plate technologies in a shell configuration allowing for higher design pressures and temperatures.

Plate Type Evaporators and System

- Optimized to be the solution with the lowest total ownership cost with outstanding performance.
- No components are welded to the plate surface that can cause corrosion and build up of fibrous materials



AKG Thermal Systems Compressed Air Aftercoolers

- Single phase, 3 phase and Class 1 Div 2 options available
- Competitive pricing and assemblies from stock
- High efficiency low fouling reduced noise series available

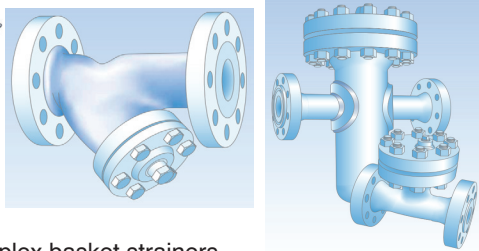


Reymrsa Cooling Towers Closed and Open Loop Cooling Towers

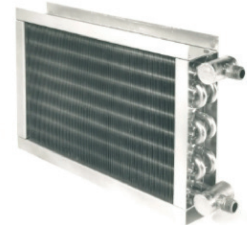
- Structural Integrity: Meets high wind velocity requirements
- Units exceed energy efficiency per ASHRAE Standard 90.1
- Fiberglass Reinforced Polyester (FRP) offers total corrosion resistance against aggressive chemicals
- Seamless cold water basin and body casing that eliminates the possibility of leaks
- Designed to be sustainable and have a low environmental impact
- Tested and certified to meet seismic requirements per the International Building Code (IBC)2



R.P. Adams Strainers



- Y-Strainers
- Simplex and duplex basket strainers
- Automatic self-cleaning strainers
- Custom fabricated strainers in a wide variety of constructed materials



Anderson Snow Heat Exchanger Coils

- Refurbish, new design, and custom fabricated intercooler cores, booster steam coils, hot/chilled water coils, and refrigeration ammonia coils in a variety of materials
- Industrial grade custom, replacement and special application heating and cooling coils can be manufactured
- Submersible coils for tank cooling and heating for the Oil and Gas, Steel and Chemical Industries



Clean Resources High-Performance Oil-Water Separators

Molecular Filtration System (50 - 10,000 CFM)

- Efficiently & effectively removes all oils, including glycol-based lubricants
- Timer drain for improved flow of condensate through the media bed
- No maintenance or messy bag change-outs
- Twelve available inlets
- Cradle-to-grave warranty



Fluid Power Energy

- Thermostatic control valves in various size and materials
- Service kits for Amot® TCV's
- Electrically & pneumatic actuated temperature control valves
- Oil cleaning centrifuges filters
- Diesel engine air intake shutoff valves

