

**OUR KNOW HOW.
YOUR PEACE OF MIND.**

Steam Solutions



Rawson
a relevant. company

Steam Solution Know-How

Our team of specialists have years of experience in planning and engineering. They combine this with partnerships that allow us to provide you with the **full steam system solution** by offering:

- A complete and quality product and component offering
- Providing steam surveys, steam management, in-field repair-ability and ongoing consultation of your steam systems
- The latest and most innovative state-of-the-art product technologies to:
 - Collect data about your steam and plant air systems
 - Identify inefficiencies
 - Offer suggestions to improve production capabilities

**Thermostatic
Steam Traps**



**Thermodynamic
Steam Traps**



**Steam and
Condensate
Manifolds with
Built-in Sealed
Valves**



**Mechanical
Free Float®
Steam
Traps**



**Punched Stainless
Steel Products**

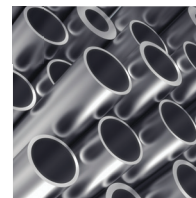
**Ball, Gate, Globe
& Check Valves**



Rawson
a relevant. company



**Pre-Insulated
Tubing**



**Copper & Stainless
Instrument Tubing**

Our specialists and know-how are equipped to solve a variety of common and complex steam issues to help you determine areas of waste related to your energy production and utilization.

Surveys & Services

We provide a detailed and comprehensive analysis and evaluation of all steam, condensate and other areas needing service or replacement.

Our steam trap surveys and testing provides:

1. Detailed testing of every trap on site (steam trap database management)
2. Engineering assistance
3. An accurate reading on how much steam you're losing through our factory trained technicians that use state-of-the-art software
4. Recommendations through comprehensive reporting with suggestions for steam trap replacement, repairs or modifications
 - Steam Trap replacement suggestions are primarily based upon a Steam Trap Application Review or "S.T.A.R." agreed upon by the site standard engineering specifications and included for each condensate discharge location regardless of test result
5. Post survey training and auditing
6. Ongoing maintenance response management

Our compressed gas leak survey:

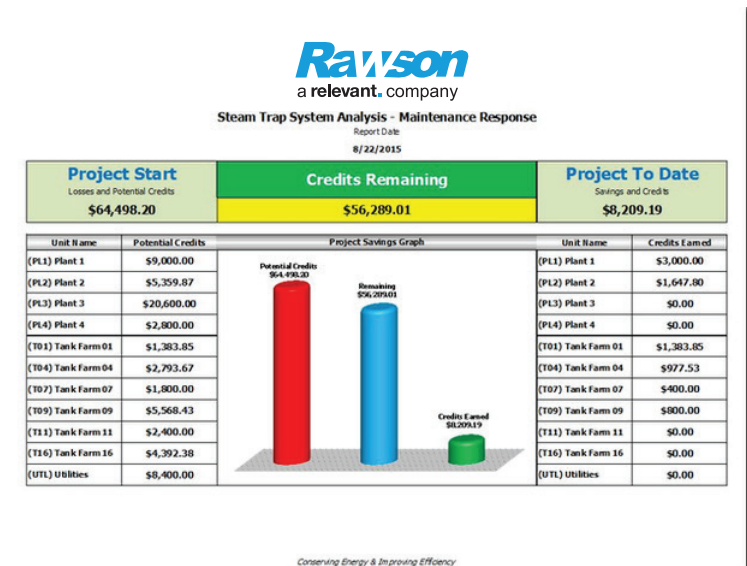
1. Identifies various gas leaks and assigns a monetary value to each
2. Tags each leak location physically and digitally
3. Provides recommendations through comprehensive reporting and mitigation assistance

Our pressure gauge evaluation survey:

1. Identifies gauges by process, manufacturer, size, etc.
2. Examines for damage, readability and functionality
3. Provides informative decisive reporting which includes recommended replacements

Instrument and equipment protection to prevent accidents and maintenance disasters later. We provide:

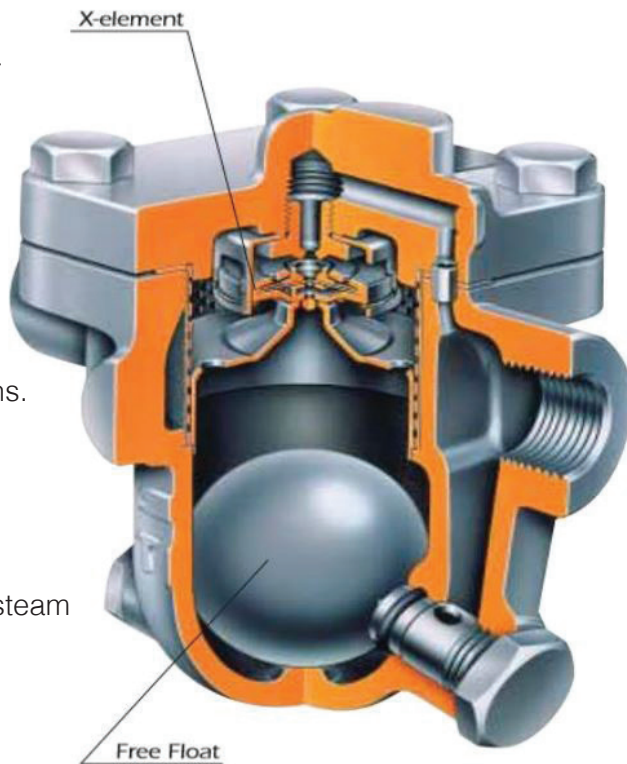
- Pre-insulated tubing
- Copper and stainless instrument tubing



Advanced Steam Trap Technology Offering

Patented Free-Float® technology - provides a continuous flow which provides a variable orifice

- Reliable and durable cast iron, cast steel or stainless steel steam trap with tight shut-off for use on medium-size process equipment and distribution headers.
- Self-modulating free float design provides continuous, smooth, low velocity condensate discharge as process loads vary.
- Precision-ground float, constant water seal and three-point seating design ensure a steam-tight seal, even under no-load conditions.
- Only one moving part, the free float, prevents concentrated wear and provides long maintenance-free service life.
- Automatic air venting removes air and non condensables during start up. Vent closes at steam temperature.
- Built-in strainer screen with large surface area ensures extended trouble-free operation.
- Easy, inline access to internal parts simplifies cleaning and reduces maintenance costs.



Steam and Condensate Manifolds with Built-in Sealed Valves – M & MP Series

Utilize the rugged, compact and versatile design of TLV's all-in-one packages for steam distribution and condensate collection to simplify and rationalize the control of your steam system. The compact size reduces installation space and organizes different steam and condensate lines, steam traps and isolation valves into one manageable package.

- Compact and versatile design minimizes installation area and easily adapts to plant requirements
- Choice of bellows sealed or piston sealed valves
- Durable, forged steel body means high endurance, long service life which lead to minimized maintenance and replacement costs
- Stellite hardened surfaces on valve plugs and valve seats provide a great seal
- Built-in blowdown and drain connections
- Manifolds with various numbers of branches, including 4, 8, 12, 16 and 20 branch models available incorporating shutoff valves and steam traps
- Custom designs are available

Redefining the disc trap concept – reduces cycles to help reduce wear on the disc and leads to longer service life

- **Longer service life** - air-jacketing reduces no-load cycling and hardened valve trim to reduce wear and promote reliable operation
- **Energy conservation** - mirror polished, lapped disc provides steam-tight seal without air binding
- **Increased productivity** - quick thermostatic air venting with bimetal ring for fast start-up
- **Easy maintenance** – replacement module design enables quick inline steam trap repair reducing maintenance costs and built-in screen for extended trouble-free service

Air Jacket

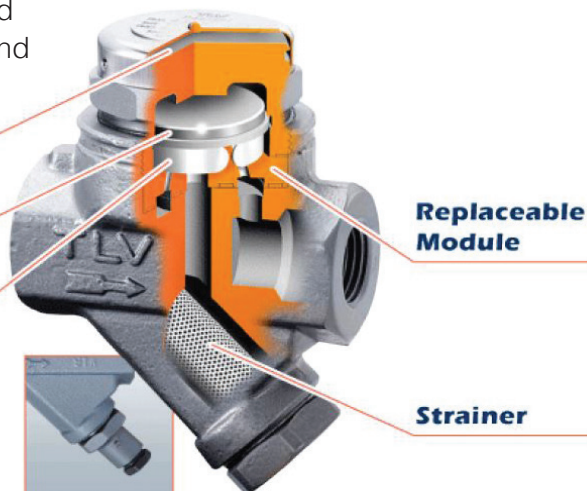
Mirror Polished Sealing Surfaces

Bimetal Air Vent Ring

Blowdown Valve*

Replaceable Module

Strainer



Universal 2-bolt connector for installation regardless of piping configuration to easily replace the complete trap

- Trap installation and replacement in minutes
- Inline replaceable trap with a 2-bolt universal connection offers high air venting capability for steam mains, tracers and coils.
- Two-bolt universal connection allows replacement of trap body with valve seat in minutes without disturbing piping reducing maintenance costs.
- Universal connector permits trap installation in the correct orientation with optimum positioning regardless of existing piping configuration.
- Screen located in the built-in wye-strainer help prevent rust, scale and debris from entering and clogging the trap.
- Debris is easily removed via the blowdown valve; further reducing maintenance costs associated with cold or blocked trap replacement.

Our steam trap technology and quality products is the preference and selection used by one of the largest refineries in the U.S.

Full line of Wye-Strainers – we also will weld the blow down valve (which we can also provide) to the wye-strainer to provide a full system solution

- Brands – Mueller / Armstrong / Titan / Others
- Sizes – 1/2" thru 24"
- Class – 125# thru 2500#
- Material – Cast Steel, Cast Iron Stainless, or Alloy Steel
- Connection – Threaded, Flanged, Socket or Butt welded
- Provided with blow out valves if needed, threaded or welded.

Replaceable Module

Cover

Disc Valve

Disc Holder Ring

Air Vent Ring

Valve Seat

Blowdown Valve*

Strainer



Steam System Solutions

Rawson, an ERIKS company, provides a detailed and comprehensive analysis and evaluation of all steam, condensate and other areas needing service or replacement. Our Energy Management & Technology (EMT) steam solution offering has led to the following results for our customers:



DOCUMENTED
ENERGY **COST**
REDUCTIONS



LONGER
PRODUCT
LIFESPANS



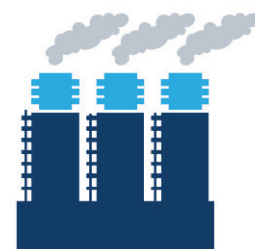
ENHANCED EFFICIENCY,
PRODUCTIVITY
AND **RELIABILITY**



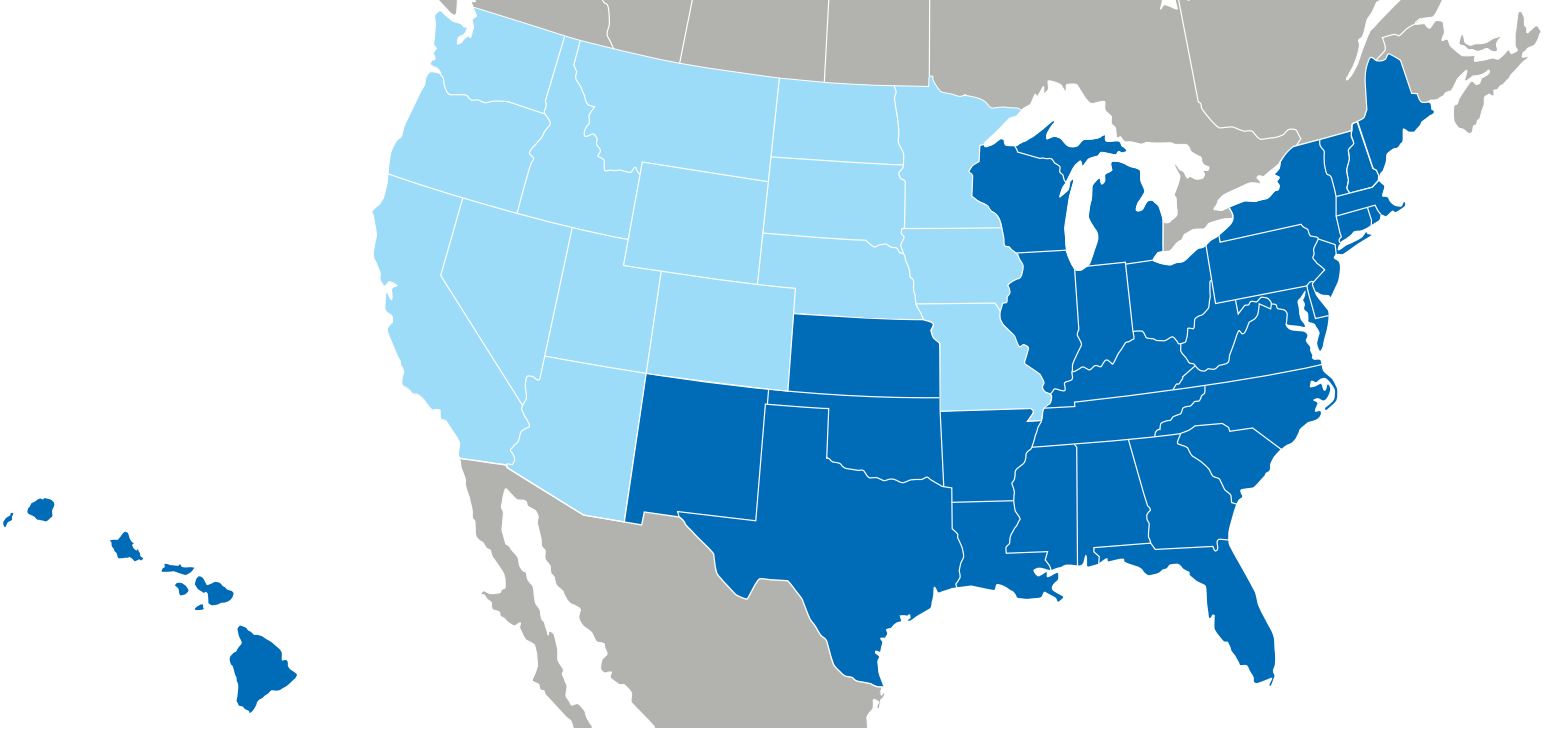
REDUCED DOWNTIME &
UNSCHEDULED
INTERRUPTIONS



UPGRADED
SAFETY



REDUCED
STEAM **LOSS**



- Primary coverage area for customer base
- Secondary coverage area

We offer complementary products and services across multiple industries.

- Conveying Systems
- Engineered Plastics
- Filtration
- Gaskets
- HVAC Controls & Measurement
- Hydraulic Hose
- Industrial Hose
- Instrumentation
- Process Controls & Measurement
- Seals
- Valve Automation
- Valves

Innovative solutions from **140** North American locations.

We put know-how where you need it. **Fast.**



For more information, to request a quote or to
contact your nearest Service Center location visit:

www.rawsonlp.com