

# Series FG Pressure Blowers



*(Shown with optional washable filter assembly)*

- **31 Sizes**
- **Air Flows: to 5,375 cfm**
- **Pressures: 12, 16, 20, 24 OSI**
- **High-Efficiency Involute Scroll Design**
- **Ambient Temperature Limit: 140°F (60°C)**
- **Lightweight Fiberglass-Reinforced Plastic Case**

Efficient fiberglass-reinforced plastic involute-scroll blowers with turbine-type impellers for dependable air supply at minimum operating cost. Also available in lower pressure version utilizing all-metal construction.

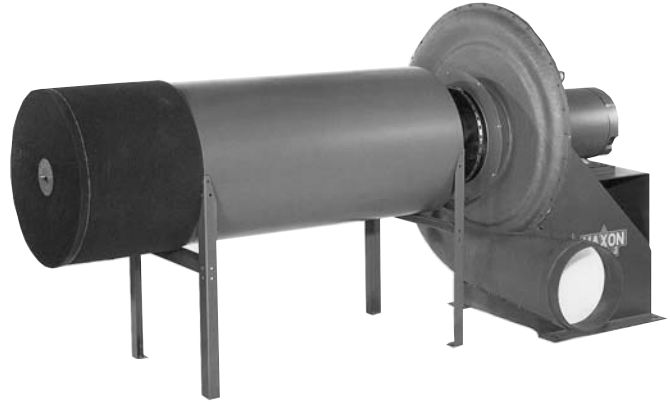


## Design Details

**Series FG Blowers** provide a superior combination of efficiency and strength. The case is laid up in precision mold equipment and coated internally with a Gelcoat liner for a smooth, hard inner surface.

This construction method permits use of a high efficiency involute scroll design, while the particular blend of fiberglass and plastic resin have been selected for industrial-use case strength.

Pressure Blowers are often used as a burner system combustion air supply. Maxon builds a broad line of industrial combustion equipment. Catalog literature describing the particular burner type chosen will aid in selection of the proper Pressure Blower.



*Blower with Axial Flow Silencer and Filter*

## Accessories

**Dampening pad sets** may be placed between blower base and support pad.

**Filter assemblies** are available for dusty or dirty applications, or where clean filtered outlet air is desirable. They include a UL-approved class II (flame retardant) washable foam or permanent element, and may be used alone or in conjunction with a silencer.

**Silencer assemblies** are offered for applications where noise level control is necessary. They may be used alone or fitted with washable air filters. Design is box-type (shown at right) or axial flow (shown above) depending on blower size.

A complete burner system using pressure blowers will also include gas train, proportioning and mixing equipment and a control panel. Your Maxon representative can help you choose from the broad range available.



*Permanent Filter*



*Blower with Silencer and Washable Filter*