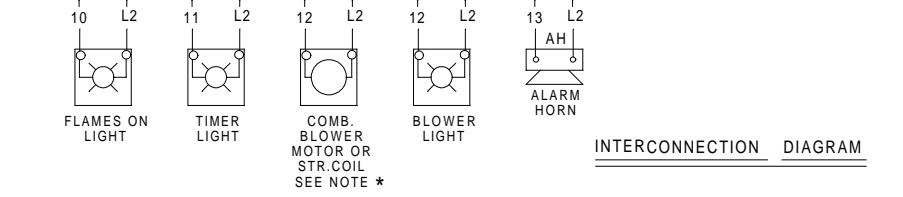
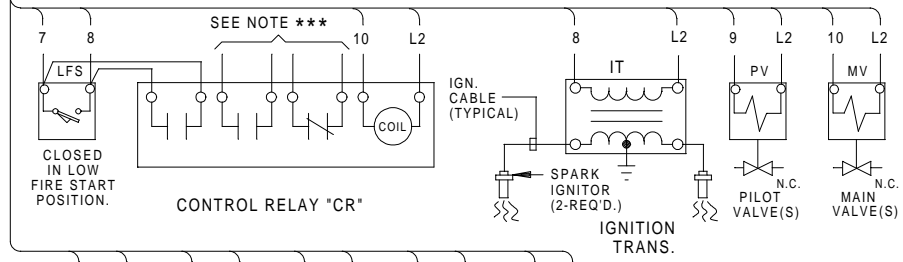
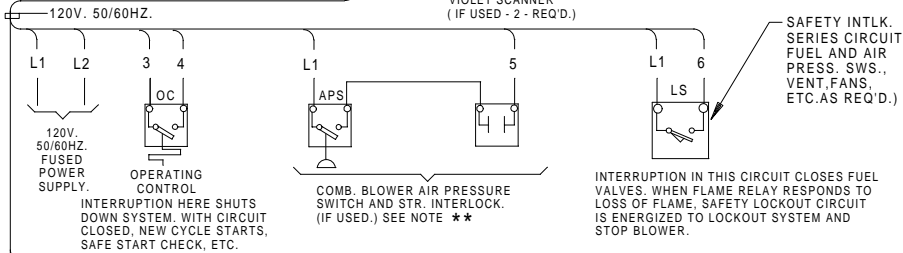
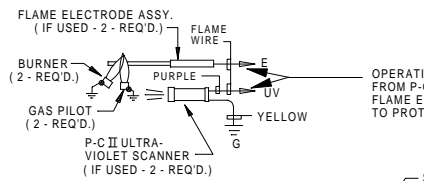
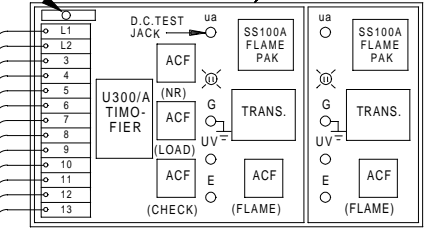


NOTES:

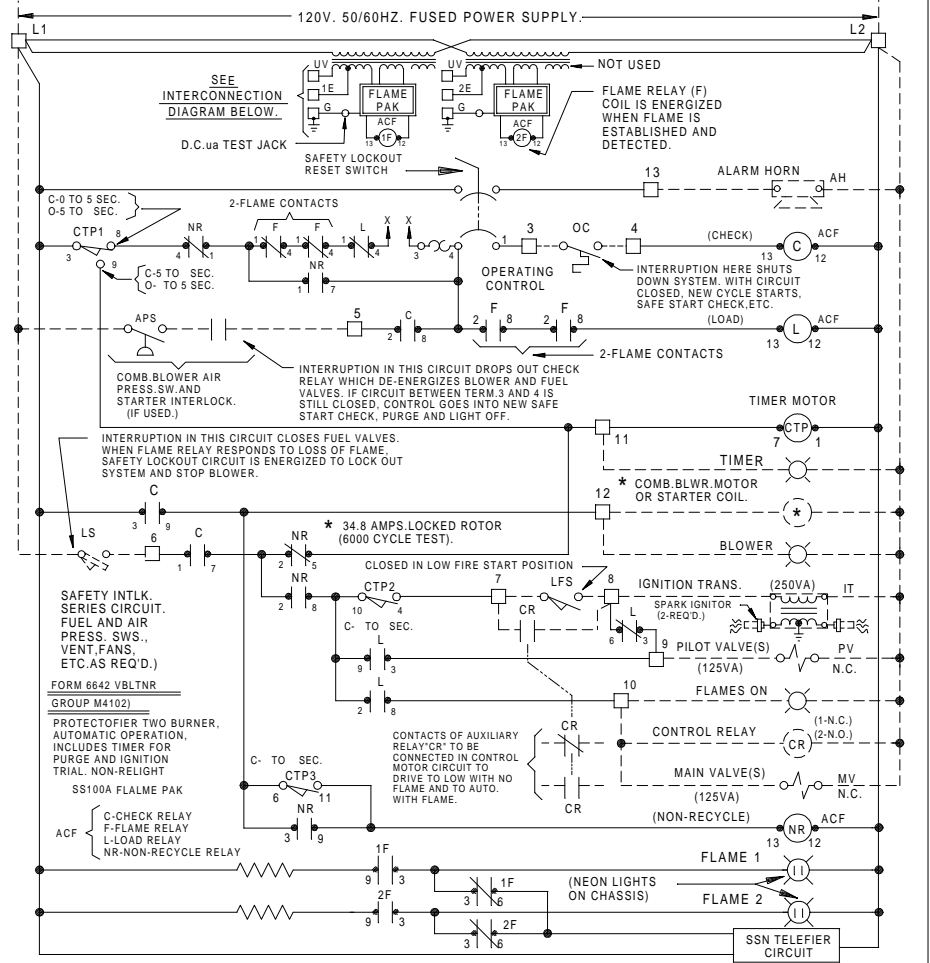
- * 34.8 AMPS. LOCKED ROTOR (6000V. CYCLE TEST)
 - ** INTERRUPTION IN THIS CIRCUIT DROPS OUT CHECK RELAY WHICH DE-ENERGIZES BLOWER AND FUEL VALVES. IF CIRCUIT BETWEEN TERM. 3 AND 4 IS STILL CLOSED, CONTROL GOES INTO NEW SAFE START CHECK, PURGE AND LIGHT OFF.
 - *** CONTACTS OF AUXILIARY RELAY "CR" TO BE CONNECTED IN CONTROL MOTOR CIRCUIT TO DRIVE TO LOW WITH NO FLAME AND TO AUTO. WITH FLAME.
- FLAME WIRE TO BE NO. 14 TYPE TW. 600V. INSULATED WIRE OR EQUAL. FLAME WIRE MUST NOT BE IN SAME CONDUITS WITH POWER WIRING.
- IGNITION CABLE MUST BE RUN IN SEPARATE CONDUIT TO SPARK ELECTRODE. (DO NOT MIX WITH 115V. WIRING.)
- ALL WIRING AND EQUIPMENT EXTERNAL TO PROTECTOFIER TO BE FURNISHED BY OTHERS UNLESS OTHERWISE SPECIFIED.
- INSTALLATION, OPERATION AND MAINTENANCE SHALL CONFORM WITH NATIONAL FIRE PROTECTION ASSOCIATION STANDARDS, NATIONAL AND LOCAL CODES AND AUTHORITIES HAVING JURISDICTION. ANY MODIFICATION VOIDS APPROVAL.

SAFETY LOCKOUT RESET SWITCH

TWO BURNER PROTECTOFIER (FORM 6642 VBLT-NR GROUP M4102)



INTERCONNECTION DIAGRAM



NOTE:

TIMER CAMS (CTP) SHOWN IN ZERO TIME POSITION. CTP2 AND CTP3 CLOSE AT END OF PURGE FOR IGNITION.

CIRCUIT DIAGRAM

- INDICATES INTERNAL WIRING
- - - INDICATES EXTERNAL WIRING

U300A AUTOMATIC TIMOFIER TIMING		
RANGE	PURGE(MIN.)	IGN.(SEC.)
A -	MIN.	SEC.

PROTECTION CONTROLS, INC. SKOKIE, ILLINOIS		
WIRING DIAGRAM FOR: PROTECTOFIER FORM 6642 VBLT-NR GROUP M4102		
JOB NO.	REVISED	DRAWING NO.
	5-04	X-332