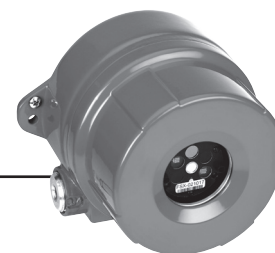


## Fire Sentry FS24X SPECIFICATIONS

### Multi-Spectrum QuadBand™ Triple IR Flame Detector



General Specifications	
Field of View	90° Cone of vision, ± 45° from on axis OR 110° Cone of vision, ± 55° from on axis
Sensitivity	Very High (200 ft.), High (150 ft.), Medium (100 ft.) and Low (50 ft.) – Switch Selectable
Response Time	3-5 Seconds to 1 sq. ft. n-Heptane fire at 100 ft. 3-10 Seconds to 1 sq. ft. n-Heptane fire at 200 ft.
Spectral Sensitivity	Visible: 400 – 700 nanometers Near Band IR: 0.7 – 1.1 microns Wide Band IR: 1.1 – 3 microns Wide Band IR: 3.0 – 5.0 microns
Operating Voltage	24 VDC nominal (18-32 VDC) - Regulated
Power Consumption	Operating: 56 mA @ 24 VDC nominal Alarm: 106 mA @ 24 VDC nominal Heater: 155 mA – additional Note: Heater will turn on at 0°F (-17°C)
Output Relays	Fire Alarm: SPDT (NO / NC) – De-energised/energized, Latching/Non-Latching Fault: SPST (NO) – De-energised/energized, Latching/Non-Latching Auxiliary: SPDT (NO / NC) – De-energised/energized, Latching/Non-Latching Contacts rating: 1 amp @ 24 VDC
Analog Output	0 - 20 mA stepped - Source or Sink User Selectable
Loop resistance	50 - 400 Ohms
Communication	One of the following – User Selectable: • RS-485, ModBus Protocol • RS-485, FireBus II • HART (not available with EN54-10 models), Optional plug-in module
Visual Indications	Green LED: Power Red LED: Alarm Yellow LED: Fault
Temperature Range	<b>Operating:</b> 110° Field of View FS24X: -40 to +185°F (-40 to +85°C); 90° Field of View FS24X: -76 to +185°F (-60 to +85°C) <b>Storage:</b> -67 to +230°F (-55 to +110°C)
Humidity Range	5 to 98% relative humidity, non-condensing
Vibration	Meets or exceeds MilSpec 810C Method 514.2, Curve AW12
Wiring	14 AWG (2.5mm2) to 22 AWG (0.326mm2); Shielded Cable Recommended
Conduit Entries	Standard: Two ¾" NPT or two M25
Enclosure Materials	Copper-Free Powder Coated Aluminum or 316 Stainless Steel
Enclosure Type	NEMA 4 & 4X, IP66
Certifications	<b>FM:</b> Class I, Div. 1, Groups A, B, C, & D; Class II/III, Div. 1, Groups E, F, & G <b>ATEX:</b> II 2 G Ex db IIC T (see description; dependent on T code), II 2 D Ex tb IIIC T135°C 110° Field of View FS24X: T4 (Ta: -40 to +110°C), T5 (Ta: -40 to +75°C), T6 (Ta: -60 to +60°C) 90° Field of View FS24X: T4 (Ta: -60 to +110°C), T5 (Ta: -60 to +75°C), T6 (Ta: -60 to +60°C) <b>CE:</b> Complies with EN6100-6-4 & EN50130-4 <b>SIL Rating:</b> FMEDA is available upon request <b>IECEX, Inmetro, GOST</b>
Shipping Weight	Aluminum: 3.6 lbs (1.6 kg) Stainless Steel: 7 lbs (3.2 kg)
Mounting	Swivel Bracket Assembly - Optional
Warranty	Three years from date of shipping

#### Find out more

[www.honeywellanalytics.com](http://www.honeywellanalytics.com)

Toll-free: 800.538.0363

#### Please Note:

While every effort has been made to ensure accuracy in this publication, no responsibility can be accepted for errors or omissions. Data may change, as well as legislation, and you are strongly advised to obtain copies of the most recently issued regulations, standards, and guidelines. This publication is not intended to form the basis of a contract.

#### General Dimensions Side and Back Views (All Dimensions in Inches)

