

FIG. 1

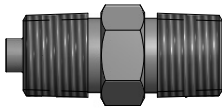


FIG. 2

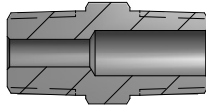


FIG. 3

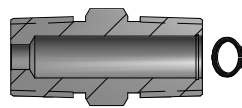


FIG. 4

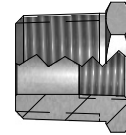


FIG. 5



### Machined Double Thread Hex Fittings

CODE	SHEATH SIZE (inches)	DESCRIPTION	FIG. NO
<i>CARBON STEEL 1/2" NPT x 1/2" NPT</i>			
6HN-CC-125-B	0.125	Braze hub	1
6HN-CC-188-B	0.188	Braze hub	1
6HN-CC-250-B	0.250	Braze hub	1
6HN-CC-375-B	0.375	Braze hub	1
6HN-CC-188-SL	0.188	Spring-loaded	2
6HN-CC-250-SL	0.250	Spring-loaded	2
6HN-CC-188-SC <sup>[1]</sup>	0.188	Self contained spring-loaded	3
6HN-CC-250-SC <sup>[1]</sup>	0.250	Self contained spring-loaded	3
<i>316SS 1/2" NPT x 1/2" NPT</i>			
8HN-CC-125-W	0.125	Weld hub	1
8HN-CC-188-W	0.188	Weld hub	1
8HN-CC-250-W	0.250	Weld hub	1
8HN-CC-375-W	0.375	Weld hub	1
8HN-CC-188-SL	0.188	Spring-loaded	2
8HN-CC-250-SL	0.250	Spring-loaded	2
8HN-CC-188-SC <sup>[1]</sup>	0.188	Self contained spring-loaded	3
8HN-CC-250-SC <sup>[1]</sup>	0.250	Self contained spring-loaded	3
<i>316SS 3/4" NPT x 1/2" NPT</i>			
8HN-DC-250-W	0.250	Weld hub	1

[1] Requires snap-ring pliers to install.

### Hex Head Reducing Bushings

CODE		THREAD SIZE (inches)	LENGTH (inches)	FIG. NO
BRASS	316SS			
22RB-BA	8RB-BA	1/4 NPT x 1/8 NPT	11/16	4
22RB-CA	8RB-CA	1/2 NPT x 1/8 NPT	15/16	4
22RB-CB	8RB-CB	1/2 NPT x 1/4 NPT	15/16	4
22RB-DC	8RB-DC	3/4 NPT x 1/2 NPT	1	4
	8RB-EC	1 NPT x 1/2 NPT	1 3/16	4
	8RB-ED	1 NPT x 3/4 NPT	1 3/16	4
	8RB-FC	1 1/4 NPT x 1/2 NPT	1 1/8	4
	679	1 1/4-18 NEF x 1/2 NPT	15/16	4

### Pipe Nipples (Schedule 40)

CODE		THREAD (inches)	LENGTH (inches)	FIG. NO
CARBON STEEL	316SS			
6PN - C - CL	8PN - C - CL	1/2 NPT	1	5
6PN - C - 2	8PN - C - 2	1/2 NPT	2	5
6PN - C - 3	8PN - C - 3	1/2 NPT	3	5
6PN - C - 4	8PN - C - 4	1/2 NPT	4	5
6PN - C - 5	8PN - C - 5	1/2 NPT	5	5
6PN - C - 6	8PN - C - 6	1/2 NPT	6	5

FIG. 6

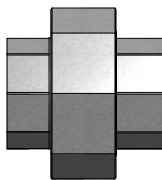


FIG. 7



FIG. 8

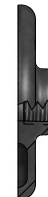
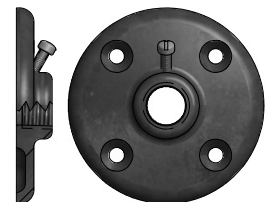


FIG. 9



### Union Fittings

CODE	NPT SIZE (inches)	DESCRIPTION	FITTING MATERIAL	FIG. NO
6FU - C	1/2	Female union-150#	Malleable iron	6
8FU - C	1/2	Female union-150#	316 SS	6
6FU - C - X	1/2	Explosion-proof female union	Zinc plated steel	6
6UE - C	1/2	90° union elbow-150#	Malleable iron	7

### Malleable Iron Mounting Flanges

CODE	NPT PIPE SIZE (inches)	DESCRIPTION	FIG. NO
6FF - B	1/4	Internal threads	8
6FF - C	1/2		8
6FF - D	3/4		8
6FF - E	1		8
6BF - B	1/4	Slip fit bore for indicated pipe size	9
6BF - C	1/2		9
6BF - D	3/4		9
6BF - E	1		9