

## Flame Arrested Burner Part Matrix

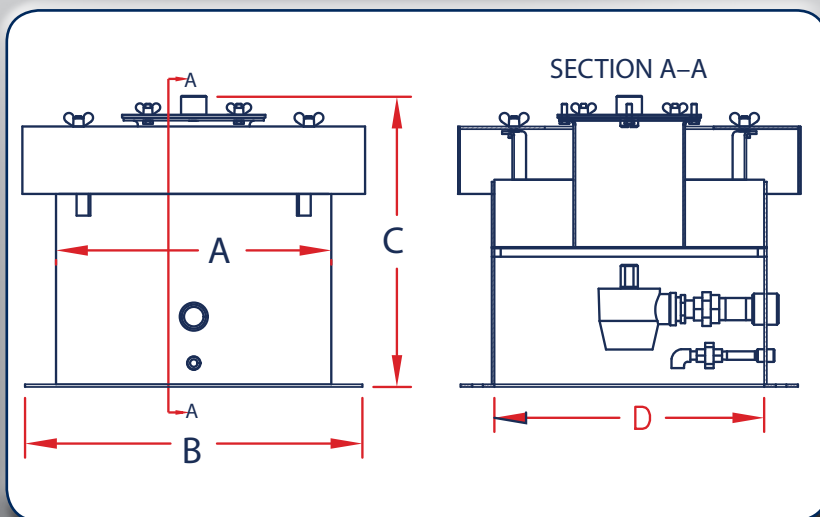


BelGAS<sup>FM</sup> Flame Arrested Burners are critical safety devices and a component in the safe operation of vapor control systems. Featuring a Press and Seal sight glass, rather than the standard welded, that helps reduce the chance of leaks and better withstands equipment vibration. Multiple sizes and BTU ratings are available with cell material choices in aluminum, 304 Stainless Steel and increased corrosion resistant 316 Stainless Steel.

### Dimensions

Model	A	B	C	D
16 - 16	16	18	17.097	16
18 - 8	18	18	17.097	8
20 - 10	20	20	17.097	10
22 - 12	22	22	17.097	12
24 - 12	24	24	17.097	12

Dimension (D) allows a tolerance of ± 0.25 (6.35 mm). Dimensions subject to change depending on materials used. Custom dimensions available upon request. All changes to standard units are subject to price change.



GB											0												
XX																							Cell Size
																							10 = 10" Through 48 = 48"
																							Minimum Size Increment 2"
																							Size of the Fire Tube O. D.
																							06 = 6" Through 30 = 30"
																							Minimum Size Increment 2"
																							Body Style
																							Hinged, Right
																							Hinged, Left
																							One-Piece
																							Box
																							Body Height
																							12" Default for
																							One-Piece Body
																							18" Default for Hinged Body
																							24"
																							Box Style
																							BTU Rating
																							250,000
																							500,000
																							750,000
																							1 Million
																							1.25 Million
																							1.5 Million
																							2 Million
																							3 Million
																							Cell Material
																							Aluminum
																							Stainless Steel 304
																							Stainless Steel 316
																							Coupling Orientation
																							90 - 270 Degree Apart
																							0 - 180 Degree Apart
																							135 - 225 Degree Apart
																							Couplings on Same
																							Horizontal Plane
																							3 Holes
																							Additional Coupling
																							45 Degrees
																							90 Degrees
																							135 Degrees
																							180 Degrees
																							225 Degrees
																							270 Degrees
																							No Additional Coupling
																							Place Holder
																							Ignition Mechanism
																							Igniter on Top Face
																							Igniter on Body Sidewall
																							Lighting Port
																							None
																							Adjustment and Monitoring
																							Flame Rod Only
																							HO Rod Only
																							Both Flame Rod and HO Rod
																							None
																							Burner Tip Style
																							Rosebud
																							Stick Tite
																							Bell
																							Special Options
																							Standard
																							Special Option
																							Welder Nut on Flange

NOTE: BTU Rating is determined by Fire Tube OD and Total Overall Length (TOL.) Consult factory for proper configuration.