

CAUTION:

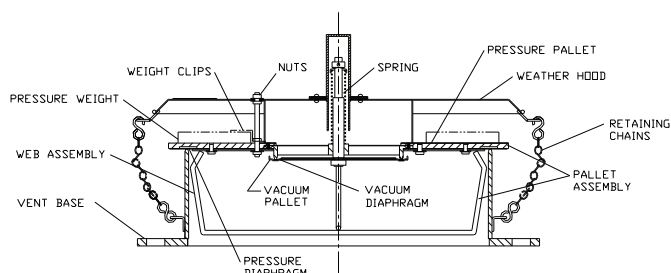
If any questions arise concerning the proper installation or maintenance of our products, please contact Protectoseal or one of our Authorized Representatives.

When installing any Protectoseal device, the legal, corporate and advisory safety regulations and procedures appropriate for the specific installation site must be fully understood and followed.



NOTE 1: The Series 52500 Pressure/Vacuum Vent is shipped as two components, the vent base and the pallet assembly.

NOTE 2: When pressure loading weights are included with a unit they may be shipped separately to avoid damage to the unit. The weight(s) should be inspected, properly identified and set aside for later installation.



INSTALLATION PROCEDURE:

1. Unhook the retaining chains from the pallet assembly and remove the pallet assembly from the base. Remove and discard all protective packaging material from on or inside the vent. Remove and discard cardboard and tape from the pallet assemblies.
2. Check carefully to insure that no packing or protective materials remain on or inside the vent base or the pallet assemblies.
3. Mount the vent base to the appropriate tank flange using gaskets compatible with service conditions. For best performance, the vent base should be mounted level so that the seating surfaces are no more than 1° off horizontal.
4. If a pressure setting weight is provided, assemble the weight to the top of the pallet assembly. This is accomplished by removing the weatherhood, centering the weight on the pallet and then securing the weight to the pallet with the provided weight clips. Once the weight(s) (if provided) has been installed, replace the weatherhood and secure with nuts.
5. Install the pallet assembly into the base. The guide web assemblies are positioned inside seat. Note: The pallet assembly should be free to move up and down in the base, guided by the web assembly.
6. The vacuum setting for the vent is provided by spring force and is set at the Factory. No modification to the spring compression or the vacuum pallet assembly is required.
7. Reconnect the base mounted retaining chains to the clips on the pallet assembly. These chains are intended to limit the lift of the pallet assembly under operating conditions and to retain the pallet assembly so that it may re-seat when excessive pressure in the tank has been relieved.

MAINTENANCE:

Protectoseal recommends that our products be inspected and maintained according to the normal maintenance schedule of the facility. At a minimum, maintenance should be conducted annually. More frequent maintenance may be required, and should be scheduled, for unusual service conditions.

CAUTION: When maintaining any Protectoseal device, the legal, corporate and advisory safety regulations and procedures appropriate for the specific installation site must be fully understood and followed.

CAUTION: Tank vapor space pressure or vacuum should be relieved before any maintenance operations are undertaken.

MAINTENANCE PROCEDURE:

1. Unhook the retaining chains from the pallet assembly. Lift the pallet assembly from the base.

Note: Depending on the pressure set point of the vent, the weight of the pallet assembly and weight combination may be significant – exercise caution.
2. Remove any loose dirt or foreign material from the seating surfaces and from the pallet assembly areas. Make sure that the vacuum pallet assembly is free to move against the setting force of the spring. Note: The vacuum setting is Factory set by compression of the spring. The compressed height of the spring should not be changed during any maintenance operations. Changes to the spring compression will change the vacuum set point of the vent.

3. Inspect and clean the machined seating surface of the base with a suitable cleaning fluid. The seat should be free of nicks, mars or accumulations of foreign material.

CAUTION: Do not use a file or other sharp tool to clean the seating surface.

4. Inspect the pressure and vacuum pallet assemblies. If a pallet is deteriorated or bent, it must be replaced. Inspect the diaphragm material in the pallet assemblies. The diaphragm must be clean, flat and smooth. If the diaphragm material is deteriorated, it must be replaced. The vacuum diaphragm may be replaced by removing the nut that holds the vacuum pallet in position, removing the pallet and reinstalling the vacuum diaphragm. The pallet should be repositioned and the nut should be secured. The pressure diaphragm can be replaced by removing the fasteners that hold the web assembly to the pallet. The web assembly and diaphragm can then be removed. Replace diaphragm and reassemble web assembly to unit with fasteners.
5. Reposition the pallet assembly in the base. Make sure that the assembly is free to move up and down with the web assembly guiding on the base inside diameter. Reconnect the base mounted retaining chains to the clips on the pallet assembly.

Distributed by:



888.858.3647 | relevantsolutions.com

ADDITIONAL PRODUCTS FROM PROTECTOSEAL

Series 53300



Emergency Pressure Manhole Cover Vents provide emergency pressure relief for storage tanks where vacuum relief is being provided for by a separate operating vent

Series 7800



Emergency Vent protects tanks against rupture or explosion resulting from excessive internal pressure caused by exposure to fires.

Series 4950



Vent Line / In-Line Parallel Plate Flame Arrester is designed for installation in open vent pipe or bleed lines from storage or processing tanks. Suitable for NEC Group D (IEC Group IIA) vapors

Series 830



Combination Pressure / Vacuum Relief Vent & Flame Arrester provides pressure and vacuum relief as well as protection from propagation of externally introduced flames. Suitable for NEC Group D (IEC Group IIA) vapors.