

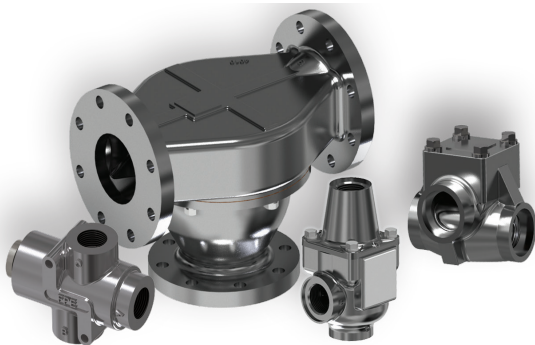


In 1975 Fluid Power Energy (FPE) was established as a family business by Richard Bayerlein and his son Doug. FPE is probably the world's largest manufacturers of industrial thermostatic control valves (TCV) and serves customers on all continents, with plants and offices around the globe.

FPE continues to relentlessly pursue the same family and customer values:

- Customer Service,
- Highest Quality at the Best Price
- Fastest Lead Times
- Innovation: products & processes

FPE constantly collaborates; becoming an integral engineering and manufacturing extension for many of their customers, allowing them to focus on their core mission. FPE often holds inventory, private label, and develops customized thermostatic control valve solutions for maximum performance, cost reduction, and packaging integration.



[www.FPEvalves.com](http://www.FPEvalves.com)

EUROPE, MIDDLE EAST,  
AFRICA, ASIA + PACIFIC  
+44 1733 206 678  
[emeaap@FPEvalves.com](mailto:emeaap@FPEvalves.com)

AMERICAS  
+1 262 548 6220  
[sales@FPEvalves.com](mailto:sales@FPEvalves.com)

CHINA  
+86 21 6163 0930  
[china@FPEvalves.com](mailto:china@FPEvalves.com)

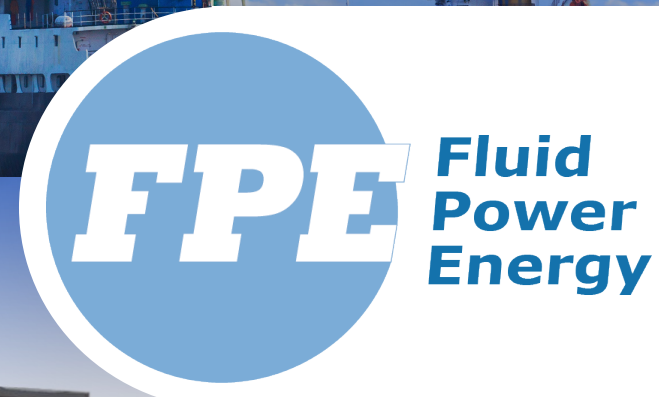
Copyright © 2022 Fluid Power Energy, Inc. All Rights Reserved. B-2001 1015



Power Generation



Marine



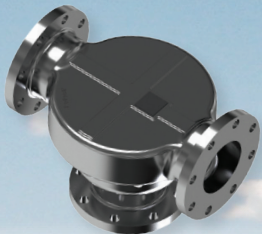
Everywhere You Are  
Industrial



Oil & Gas



# FPE. Your Source for Solutions



## TCVs - THERMOSTATIC CONTROL VALVES: ½" - 6"

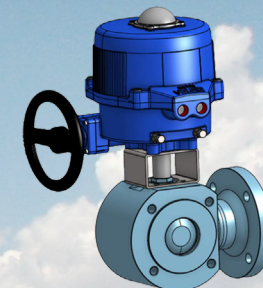
Set & Forget - FPE Thermostatic Temperature Control Valves

- Aluminum, Cast Iron, Ductile, Bronze, Low Lead Bronze, Steel, Stainless Steel
- Wide range of temperatures, Heavy duty, Self-contained
- Tamper Proof/Non-adjustable, Replaceable element
- Operate in any position
- Wide Selection of Options, including Private Label, etc.

## ACTUATED TEMPERATURE CONTROL VALVES: ½" - 6"

Electrically & Pneumatic Actuated Temperature Control Valves

- Ball Valves: 2 way & 3 way
- Steel & Stainless Steel
- Weighs Less, Stronger, More Reliable
- Operates in any position
- Modulating and ON/OFF
- 100-240 VAC, 12 VAC/DC, 24 VAC/DC



## REPLACEMENT PARTS

Full range of AMOT® replacement parts:

- Thermostats including Manual Override Thermostats
- Service kits for AMOT® thermostatic temperature control valves
- O-rings, Sleeves, gaskets and all other parts

Amot® is the registered trademark of Amot® Controls Corp. and is not affiliated with Fluid Power Energy.

## AIR SHUTOFF VALVES: 1/2" - 8"

Utilized on a Diesel Engine Inlet Air Connection between Air Intake Filter and Turbocharger Inlet as an emergency device to shut down the air inlet flow into the combustion chamber to shut down the engine in the event of engine over speed due to the ingestion of flammable vapors.

- Electrically or Pneumatically operated
- Automatic with no power source required
- Manual option

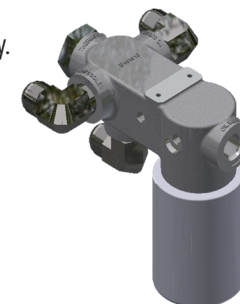


## ENGINEERED SOLUTIONS

Custom designs, manufacture & assemblies. Greater integration & reliability. Reduce total cost, size, weight, assembly, leakages.

Some Integral Options:

- Thermostats (TCVs), Fluid Filter(s),
- Features: e.g. Mounting Brackets
- Multiple ports/connections
- Integral Check-Valves, Pressure Relief Valves
- Gauges, Sensors, Actuators



## Spin-Clean™ — OIL CLEANING CENTRIFUGE

A true centrifuge that removes suspended contamination better than a traditional filter, to reduce wear on all moving contact surfaces and extends existing filter life.

- Removes contamination to less than 1 micron in size
- Extends life of oil
- Extends existing filter life
- Easy Installation & retro fit kits
- Easy Maintenance
- Reduces hazardous waste
- Range of sizes to fit applications

